



Protective gear in malls and hotels is designed to ensure the safety of maintenance staff, security personnel, and construction workers while performing their duties. Common items include:

- **Safety Helmets:** Protect against head injuries from falling objects or bumps.
- **High-Visibility Vests:** Bright reflective clothing to ensure visibility in busy areas.
- **Gloves:** Protection for hands from cuts, abrasions, and chemicals.
- **Safety Glasses and Goggles:** Eye protection from dust, debris, and splashes.
- **Safety Shoes/Boots:** Footwear with reinforced toes and slip-resistant soles.
- **Hearing Protection:** Earplugs or earmuffs in noisy environments.

These items are essential to maintain occupational safety standards and ensure the well-being of workers in mall and hotel environments.



Reliable

Infratech Solutions

ONE STOP FOR ALL INFRASTRUCTURE NEEDS



SAFETY GLASSES



SAFETY GLASSES



WEAR DUST



VAPOR RESPIRATOR



RESPIRATORY MASK



BREATHING APPARATUS SET



WELDING MASK



WELDING MASK



SAFETY HELMET



SAFETY HELMET WITH FLASHLIGHT



EAR PROTECTION



HAIR PROTECTION



CHEMICAL GLOVES



SAFETY GLOVES



ANTI STATIC GLOVES



SAFETY BOOT



CHEMICAL BOOT



ANTI STATIC SHOES



HIGH VIS CLOTHING



PROTECTIVE CLOTHING



SAFETY HARNESS



APRON



LABORATORY COAT



LIFE JACKET

MANDATORY SIGNS / SAFETY EQUIPMENT SIGNS



Reliable

Infratech Solutions

ONE STOP FOR ALL INFRASTRUCTURE NEEDS

REQUIRED SAFETY GEAR





Safety railings in malls and hotels are designed to prevent falls, provide support, and enhance safety while complementing architectural aesthetics. They are commonly made from durable materials such as stainless steel, tempered glass, and aluminum, ensuring longevity and compliance with safety standards.

- **Designs:** Options include glass balustrades for an unobstructed view, metal railings with sleek modern finishes, and traditional handrails tailored for staircases, balconies, and terraces.
- **Materials:** Stainless steel, tempered safety glass, aluminum, and sometimes wood for aesthetic enhancement.
- **Features:** Compliance with building codes and accessibility standards (e.g., ADA), easy maintenance, weather resistance for outdoor applications, and customizable for various architectural themes.

Such railings provide protection for guests while enhancing the overall design appeal of the property, giving it a modern and polished look.



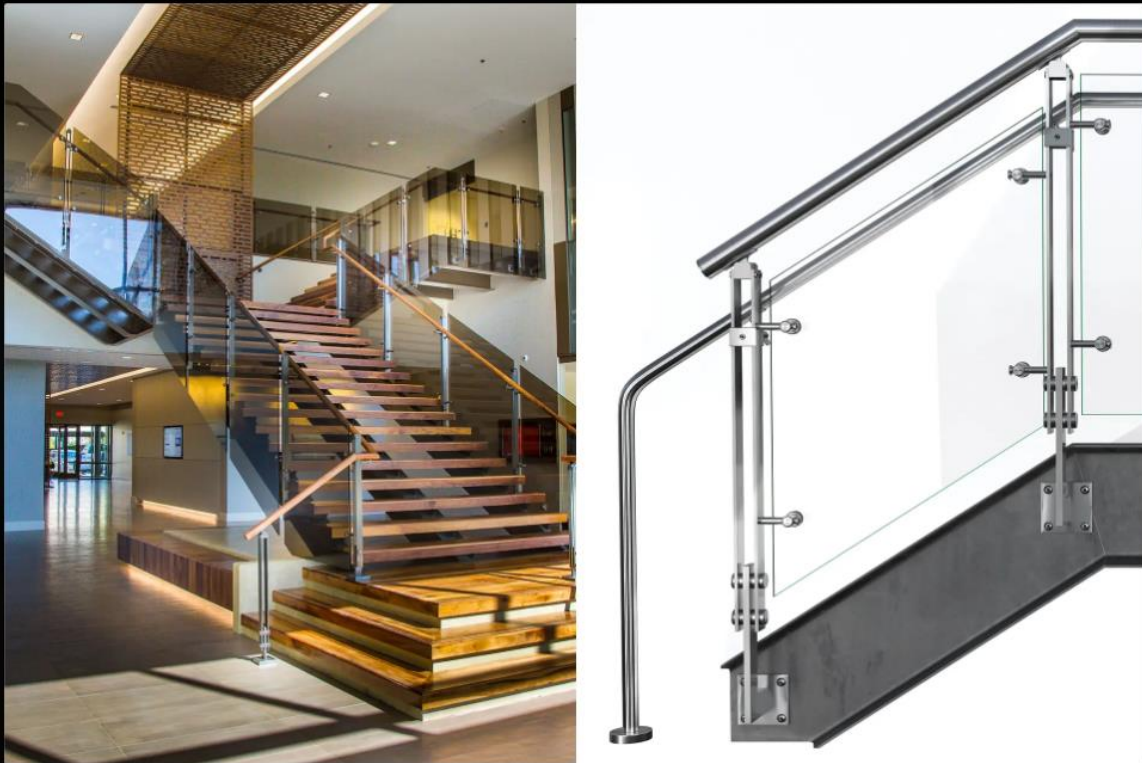
Reliable

Infratech Solutions

ONE STOP FOR ALL INFRASTRUCTURE NEEDS



acearchi.en.made-in-china.com



Toolkits used in malls and hotels typically contain a variety of hand tools essential for maintenance and repair tasks. These include screwdrivers, pliers, wrenches, hammers, measuring tapes, and utility knives. Such toolkits help maintenance staff efficiently address plumbing, electrical, carpentry, and general repair needs to ensure smooth facility operations. Portable and organized toolkits enable quick access to necessary tools, reducing downtime during upkeep and emergency repairs



Reliable

Infratech Solutions

ONE STOP FOR ALL INFRASTRUCTURE NEEDS



4

Electrical Components in malls and hotels encompass critical elements such as circuit breakers, switches, wiring, outlets, distribution boards, and safety devices. These components ensure the safe distribution and control of electrical power throughout the building, supporting lighting, HVAC systems, elevators, and other equipment. High-quality



Reliable

Infratech Solutions

ONE STOP FOR ALL INFRASTRUCTURE NEEDS

electrical components comply with safety standards and are designed for durability under continuous commercial use. Proper installation and maintenance are essential to prevent electrical hazards and ensure reliable operation of all electrical systems





Reliable

Infratech Solutions

ONE STOP FOR ALL INFRASTRUCTURE NEEDS





Reliable

Infratech Solutions

ONE STOP FOR ALL INFRASTRUCTURE NEEDS





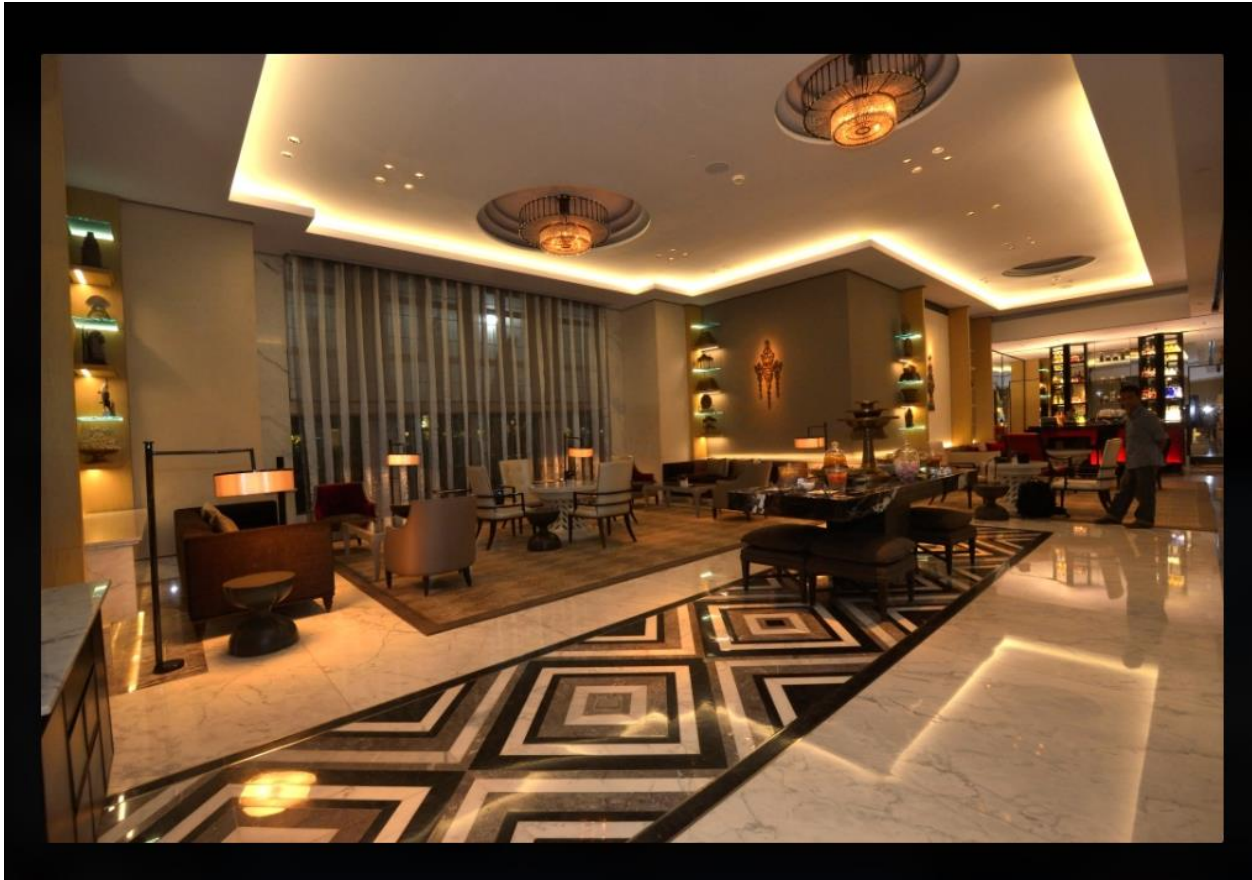
Illumination systems in malls and hotels are designed to provide ambient, task, and accent lighting, creating a welcoming and functional environment. These systems typically incorporate energy-efficient LED lighting, architectural lighting fixtures, and smart controls to enhance aesthetics and comfort.

- **Ambient Lighting:** Provides general illumination for spaces like lobbies, corridors, and retail areas.
- **Task Lighting:** Directed lighting for specific tasks such as reading, working, or cooking.
- **Accent Lighting:** Highlights architectural features, artwork, or decorative elements.
- **Decorative Lighting:** Includes chandeliers, sconces, and pendant lights that add character and style.
- **Energy Efficiency:** Use of LED lights and smart controls reduces energy consumption and maintenance costs.
- **Outdoor Lighting:** Enhances façade, pathways, and landscaping around malls and hotels for safety and aesthetics.

These lighting solutions aim to balance functionality, style, and sustainability while improving visitor experience and safety



Reliable
Infratech Solutions
ONE STOP FOR ALL INFRASTRUCTURE NEEDS

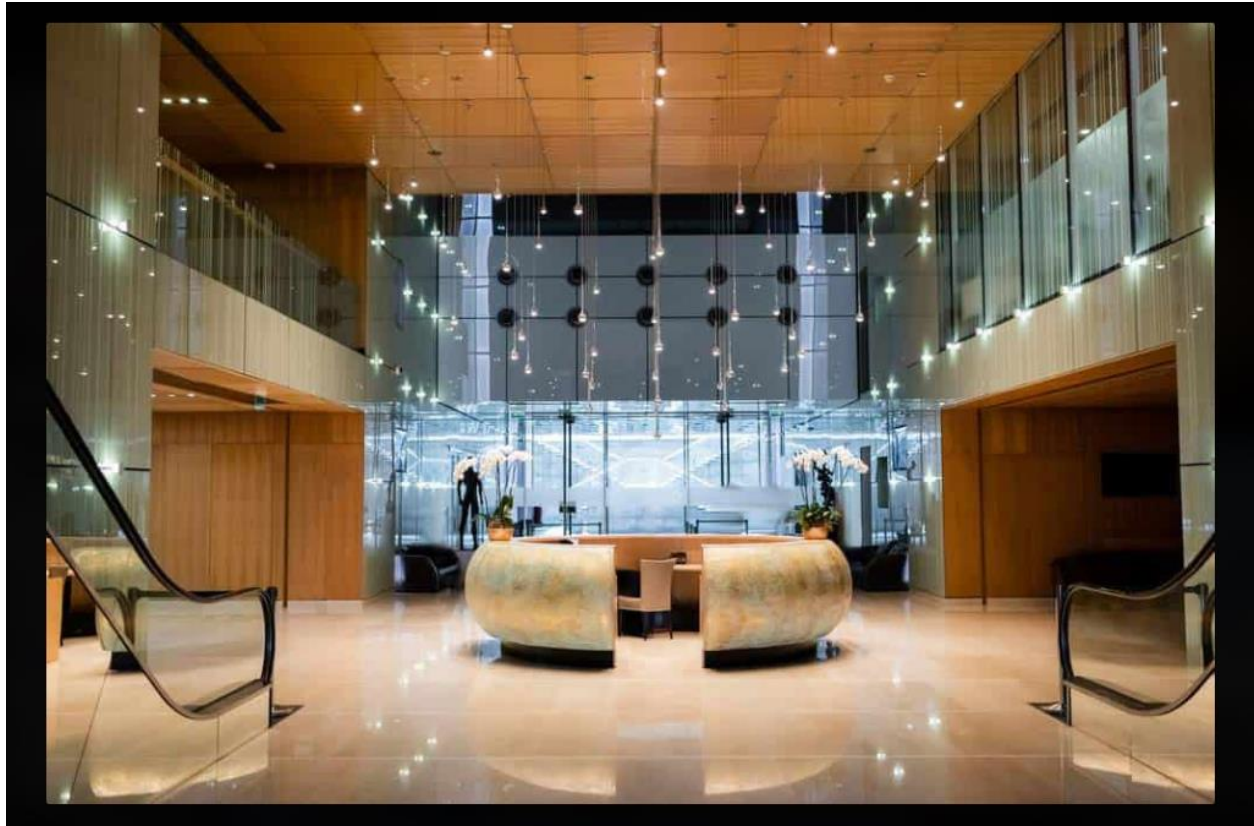




Reliable

Infratech Solutions

ONE STOP FOR ALL INFRASTRUCTURE NEEDS





Reliable
Infratech Solutions
ONE STOP FOR ALL INFRASTRUCTURE NEEDS





Sanitary solutions cover a range of plumbing fixtures and fittings essential for hygiene and sanitation in public and private restrooms of malls and hotels. These include:

- **Washbasins and Sinks:** Made from ceramic or stainless steel, available in wall-mounted, countertop, or pedestal forms.
- **Toilets and Urinals:** Modern flush systems with water-saving features.
- **Faucets and Taps:** Sensor-based or manual control types designed for water efficiency.
- **Hand Dryers and Soap Dispensers:** Automated units for hygiene.
- **Drainage Systems:** Efficient piping and floor drains for wastewater management.



Reliable
Infratech Solutions
ONE STOP FOR ALL INFRASTRUCTURE NEEDS





Reliable
Infratech Solutions
ONE STOP FOR ALL INFRASTRUCTURE NEEDS





Reliable
Infratech Solutions
ONE STOP FOR ALL INFRASTRUCTURE NEEDS





Reliable
Infratech Solutions
ONE STOP FOR ALL INFRASTRUCTURE NEEDS

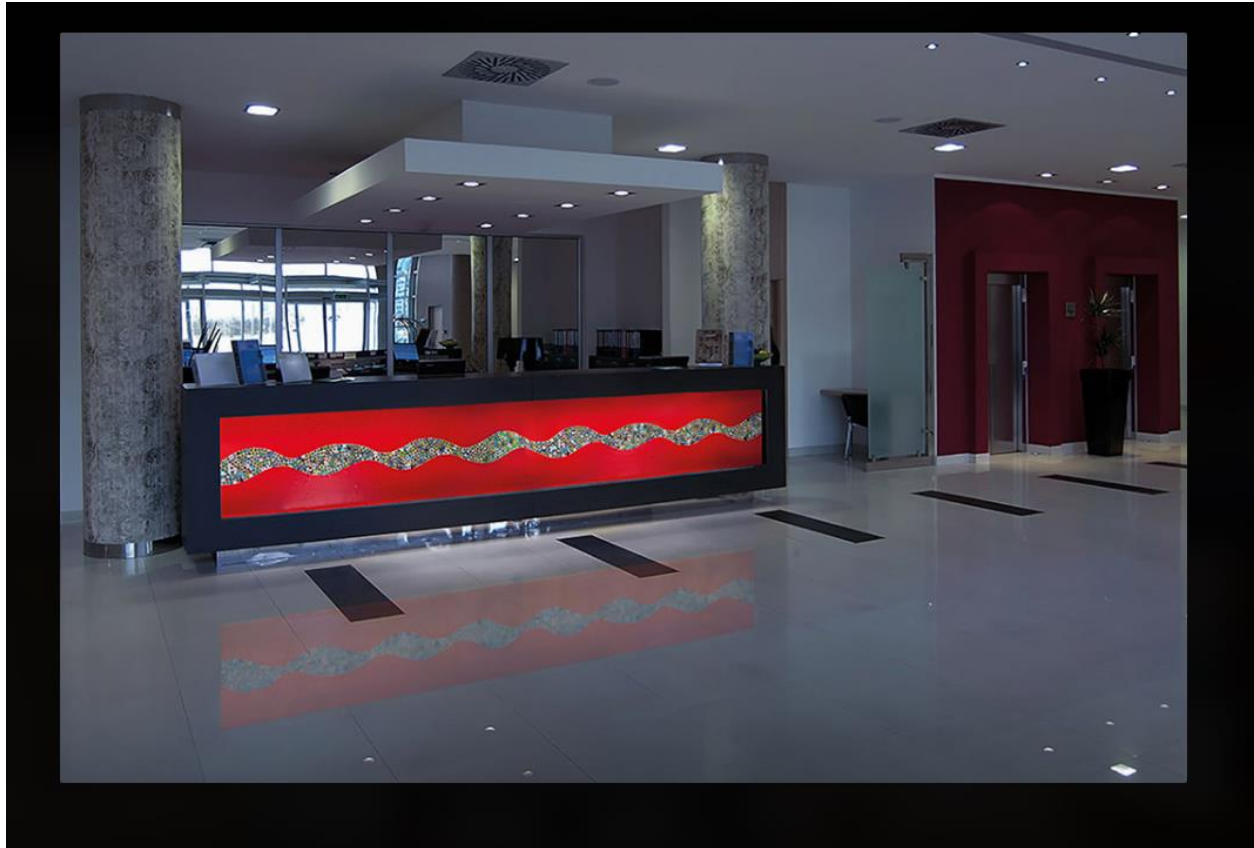




Decorative Elements in malls and hotels include artistic fixtures, glass partitions, wall panels, sculptures, lighting accents, and thematic design pieces that enhance the interior ambiance. These elements contribute to the aesthetic appeal, provide functional partitioning, and reflect the branding or style of the venue. Typical materials include tempered glass, metal, wood, and composites crafted to complement lighting, space, and visitor experience.

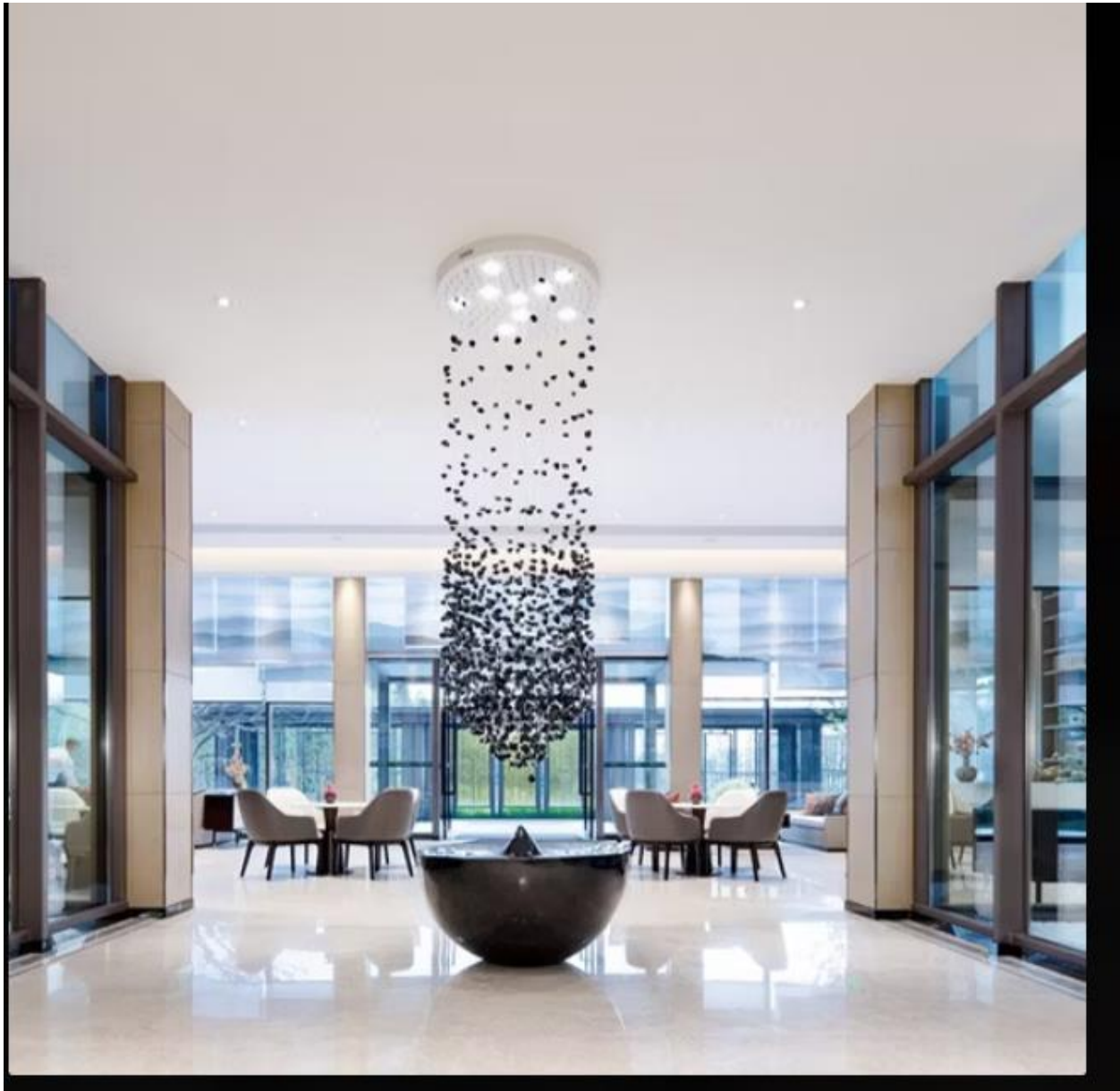


Reliable
Infratech Solutions
ONE STOP FOR ALL INFRASTRUCTURE NEEDS





Reliable
Infratech Solutions
ONE STOP FOR ALL INFRASTRUCTURE NEEDS

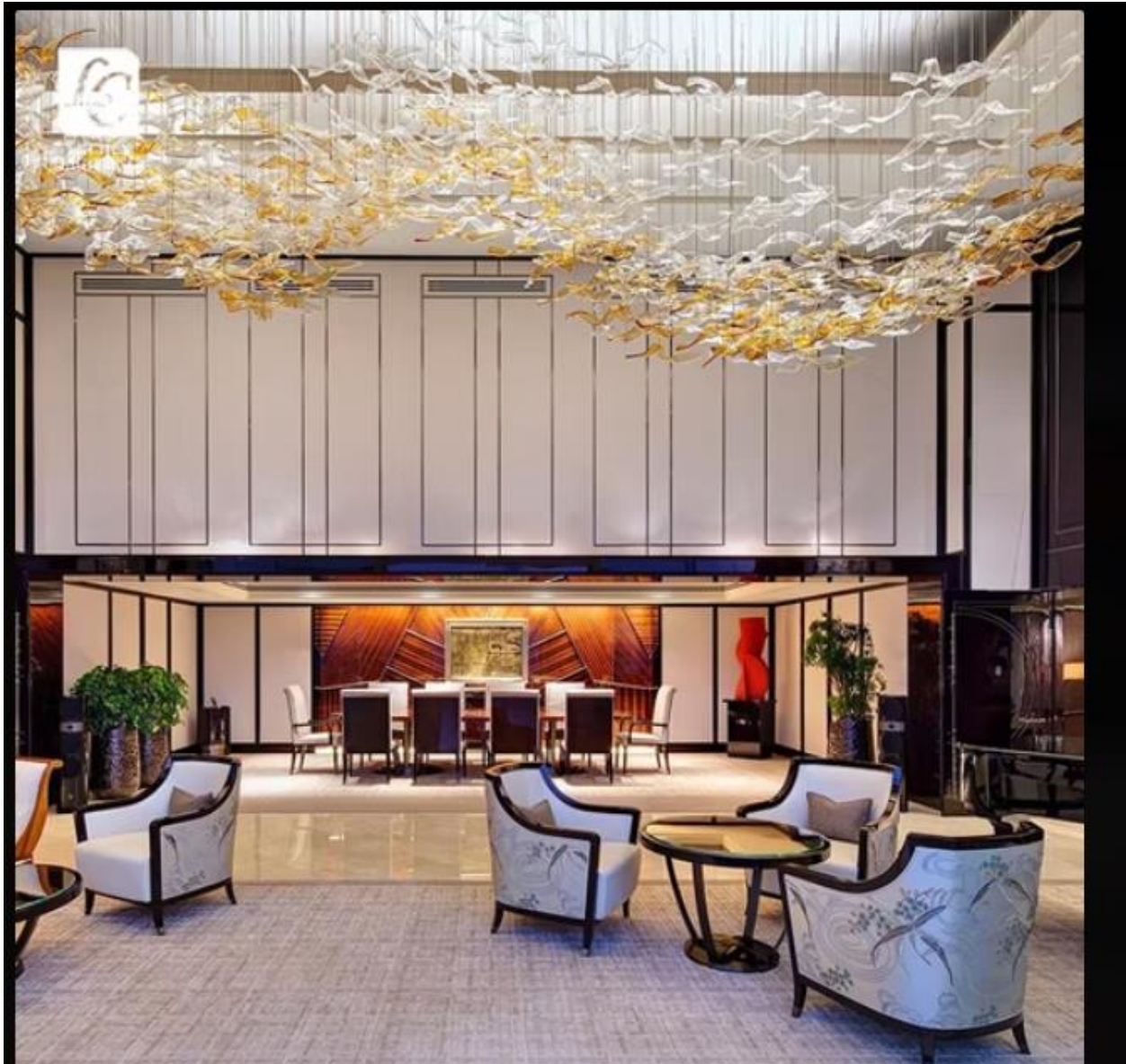




Reliable

Infratech Solutions

ONE STOP FOR ALL INFRASTRUCTURE NEEDS





Reliable

Infratech Solutions

ONE STOP FOR ALL INFRASTRUCTURE NEEDS





Reliable

Infratech Solutions

ONE STOP FOR ALL INFRASTRUCTURE NEEDS





Reliable
Infratech Solutions
ONE STOP FOR ALL INFRASTRUCTURE NEEDS





Climate Control Systems in malls and hotels involve sophisticated HVAC (Heating, Ventilation, and Air Conditioning) installations designed to maintain comfortable indoor temperatures and air quality. These include:

- **Ducted AC Systems:** Centralized air conditioning delivering cooled or heated air via duct networks to different zones.
- **Split AC Systems:** Individual units for targeted cooling in specific rooms or public spaces.



- **Ventilation Systems:** Ensure fresh air circulation and removal of contaminants.
- **Energy-efficient Controls:** Automated thermostats and smart sensors optimize energy consumption while maintaining comfort.
- **Air Filtration Components:** Improve indoor air quality by filtering dust, allergens, and pollutants.

Such systems are engineered for large open spaces, multiple floors, and varying occupancy, balancing performance, energy efficiency, and user comfort.





Reliable
Infratech Solutions
ONE STOP FOR ALL INFRASTRUCTURE NEEDS





Reliable

Infratech Solutions

ONE STOP FOR ALL INFRASTRUCTURE NEEDS





Reliable

Infratech Solutions

ONE STOP FOR ALL INFRASTRUCTURE NEEDS

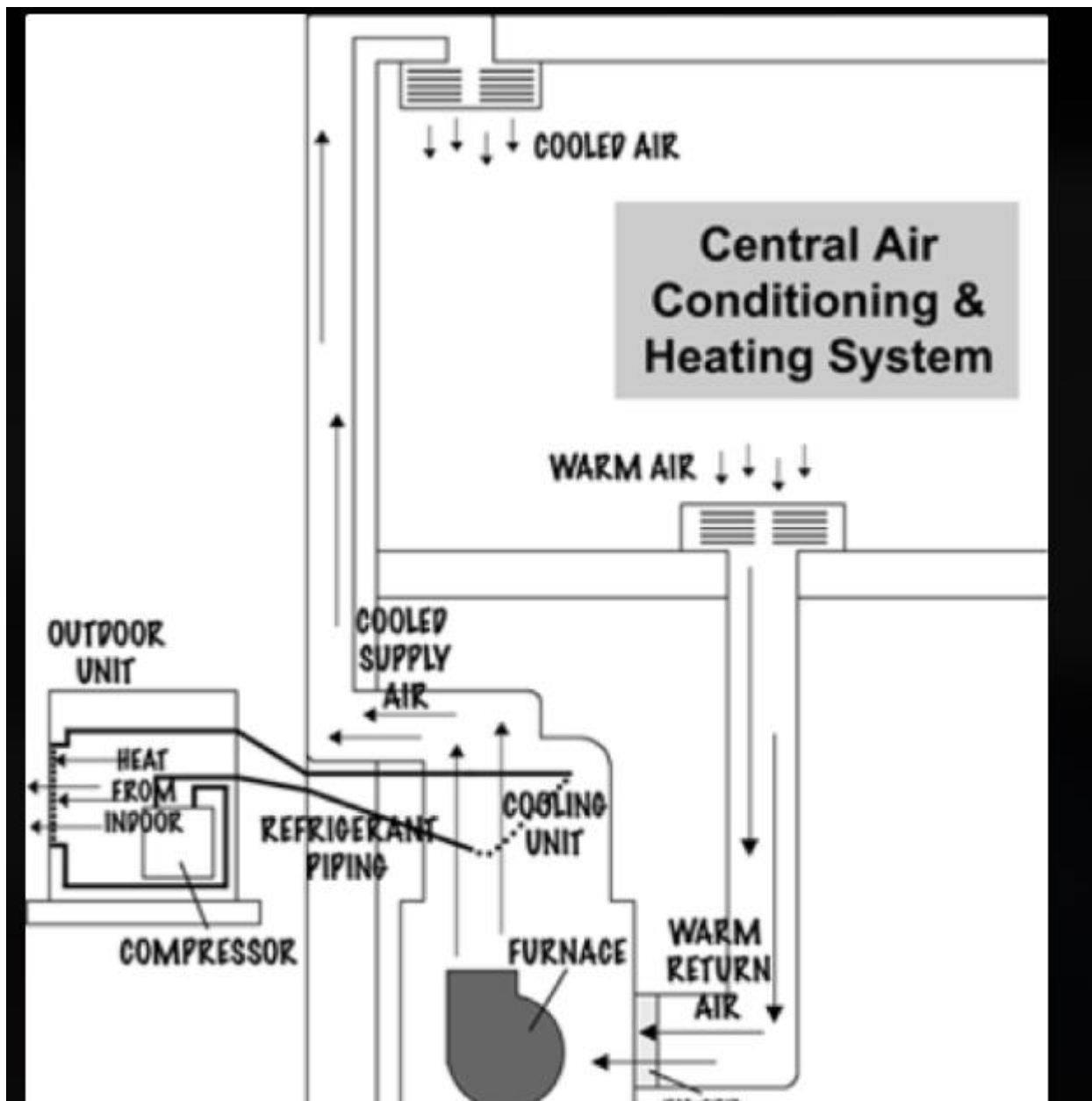




Reliable

Infratech Solutions

ONE STOP FOR ALL INFRASTRUCTURE NEEDS





Reliable

Infratech Solutions

ONE STOP FOR ALL INFRASTRUCTURE NEEDS



One-way Cassette
2.2-7.1kW



Two-way Cassette
3.6-8.0kW



4-way Cassette
2.2-16kW



Round-flow cassette
5.6-16kW



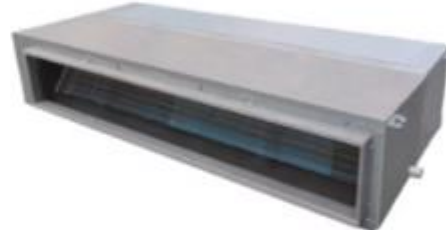
Wall-mounted
2.2-7.1kW



Floor Ceiling
3.6-16kW



Short ducted
2.2-7.1kw



Medium ESP ducted
7.1-15kw



High ESP ducted
7.1-56kw



Fresh air processor
14-56kw



Elevator Mechanisms include the essential components that enable the smooth and safe vertical transportation of passengers within malls and hotels. Key items comprise:

- **Elevator Motors:** Provide the mechanical power to move the elevator car between floors.
- **Control Panels:** Electronic systems managing elevator operations including floor selection, door operation, and safety monitoring.
- **Safety Systems:** Emergency brakes, door sensors, overload detectors, and communication devices that ensure passenger safety.
- **Suspension Ropes and Sheaves:** Support and guide the elevator car's movement.
- **Drive Systems:** Types include traction and hydraulic drives, selected based on building height and capacity requirements.

These mechanisms work together to deliver reliable, efficient, and secure elevator services in high-traffic commercial environments.



Reliable

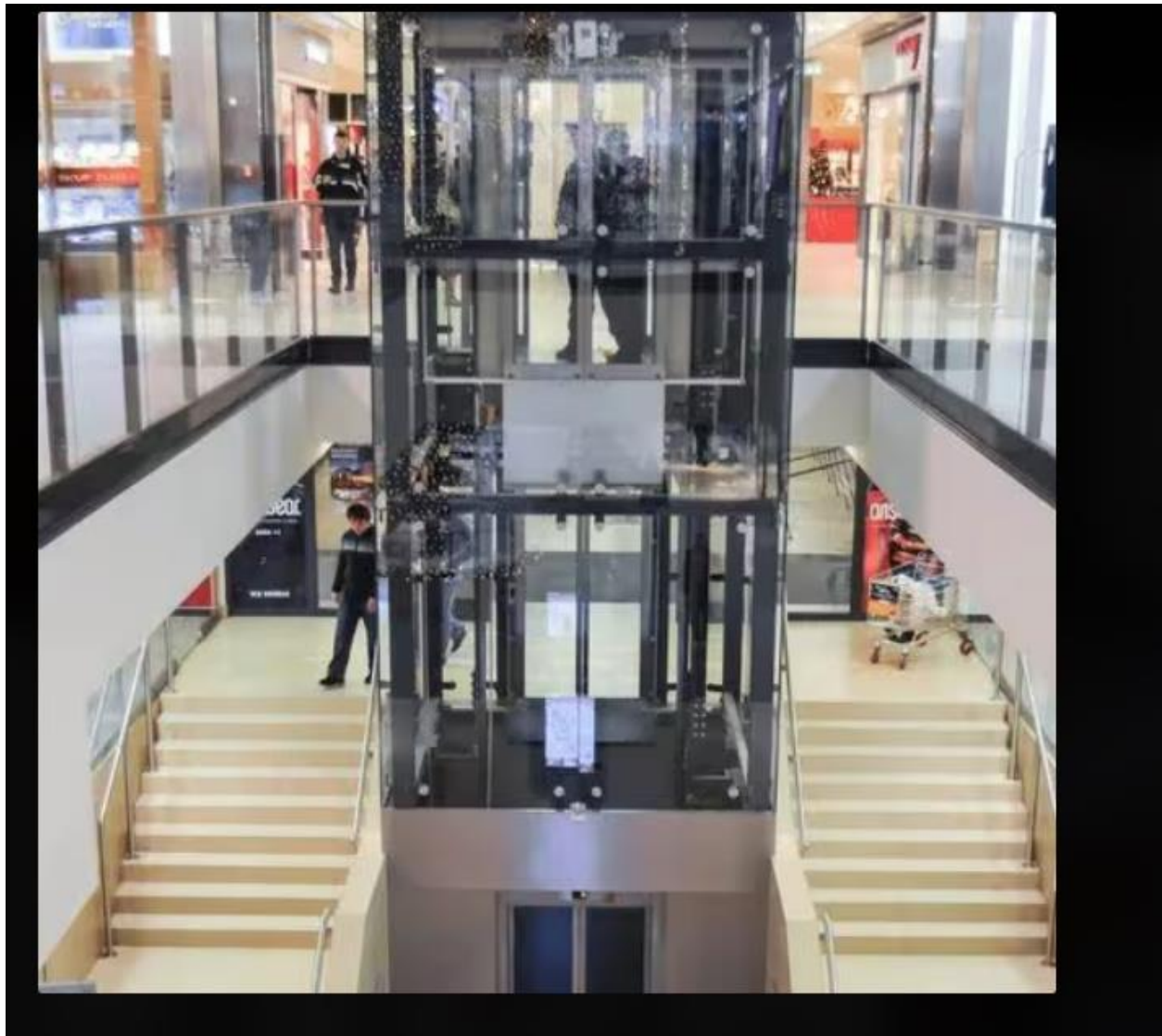
Infratech Solutions

ONE STOP FOR ALL INFRASTRUCTURE NEEDS





Reliable
Infratech Solutions
ONE STOP FOR ALL INFRASTRUCTURE NEEDS





Reliable

Infratech Solutions

ONE STOP FOR ALL INFRASTRUCTURE NEEDS





Fire Protection Systems

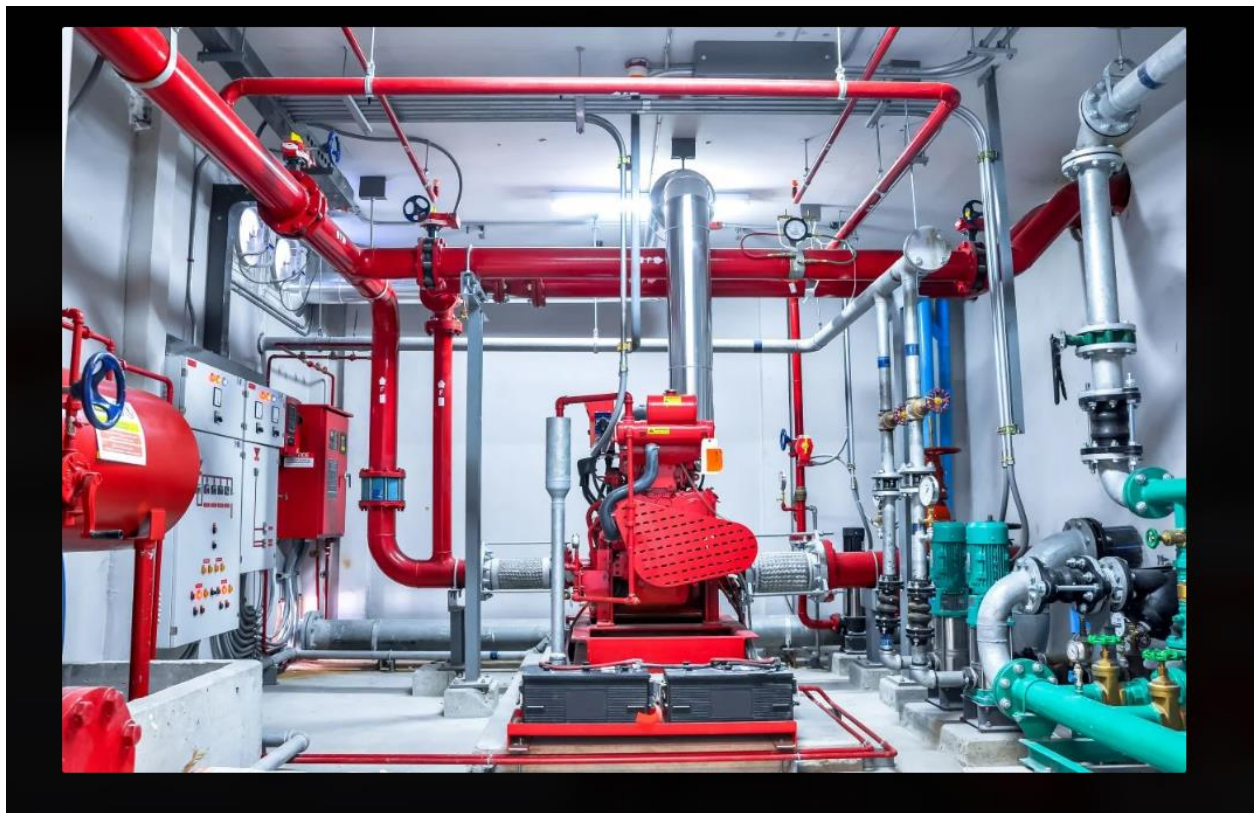
Fire Protection Systems for malls and hotels consist of integrated safety components designed to detect, suppress, and alert occupants in case of fire emergencies. These systems include:

- **Fire Sprinklers:** Automated water or chemical sprinklers that activate to control or extinguish fires.
- **Smoke Detectors and Alarms:** Devices that detect smoke or heat and trigger alarms for early warning.
- **Fire Extinguishers:** Portable devices to manually fight small fires.



- **Fire Alarm Panels:** Central control panels that monitor and signal fire detection devices.
- **Emergency Lighting and Exit Signs:** Illuminate escape routes for safe evacuation.
- **Fire-resistant Building Materials:** Used alongside these systems to contain and slow fire spread.

These components work together to ensure compliance with safety regulations, protect property, and safeguard lives in high-occupancy structures like malls and hotels





Reliable
Infratech Solutions
ONE STOP FOR ALL INFRASTRUCTURE NEEDS



Sprinkler System





Reliable

Infratech Solutions

ONE STOP FOR ALL INFRASTRUCTURE NEEDS





Reliable
Infratech Solutions
ONE STOP FOR ALL INFRASTRUCTURE NEEDS





Reliable

Infratech Solutions

ONE STOP FOR ALL INFRASTRUCTURE NEEDS

Intelligent Fire Alarm Control Panels



Sleeping Room Low Frequency 520 HZ Horns and Strobes



Intelligent Addressable Detectors





Cabinetry units

Cabinetry units in malls and hotels primarily include storage and display cabinets designed with aesthetics, functionality, and durability to withstand high traffic and varied usage. These units vary from kitchen cabinets, lounge storage, display shelving, to specialty cabinets for guest rooms and public areas.

- **Materials:** Commonly made of solid wood, plywood, laminated MDF, or stainless steel for hygienic and durable performance.
- **Design:** Available in modular, custom-built, and contemporary styles catering to hotel and commercial space themes.
- **Usage:** Kitchen cabinetry for food service areas, reception and concierge counters, display units for retail spaces, and wardrobe/storage units for hotel rooms.
- **Features:** Often include features like soft-close drawers, built-in lighting, adjustable shelves, and integrated locks for security.

Such cabinetry is engineered to be robust, easy to maintain, and visually appealing, complementing the overall interior design and enhancing utility.



Reliable
Infratech Solutions
ONE STOP FOR ALL INFRASTRUCTURE NEEDS





Reliable
Infratech Solutions
ONE STOP FOR ALL INFRASTRUCTURE NEEDS





Reliable
Infratech Solutions
ONE STOP FOR ALL INFRASTRUCTURE NEEDS





Reliable
Infratech Solutions
ONE STOP FOR ALL INFRASTRUCTURE NEEDS





Furniture Units

Furniture includes items designed for aesthetics, comfort, and durability in high-traffic spaces such as hotel rooms, lobbies, restaurants, and lounges. These include:

- **Guest Room Furniture:** Beds, wardrobes, desks, chairs, and luggage racks aimed at comfort and functionality.
- **Lobby Furniture:** Sofas, lounge chairs, coffee tables, and reception desks that create a welcoming atmosphere.
- **Restaurant and Dining Furniture:** Tables, chairs, and bar stools designed for durability and style.
- **Conference Room Furniture:** Formal and functional tables and chairs for meetings and events.
- **Outdoor Furniture:** Weather-resistant tables, chairs, and loungers for patios and poolside areas.

These furniture units prioritize comfort, ergonomic design, and ease of maintenance to withstand heavy use while enhancing the venue's overall ambiance and guest experience.

For visual references, popular furniture items in such settings often include upholstered sofas, wooden or metal dining sets, cushioned lounge chairs, and modular reception desks that align with the hotel's or mall's interior design theme

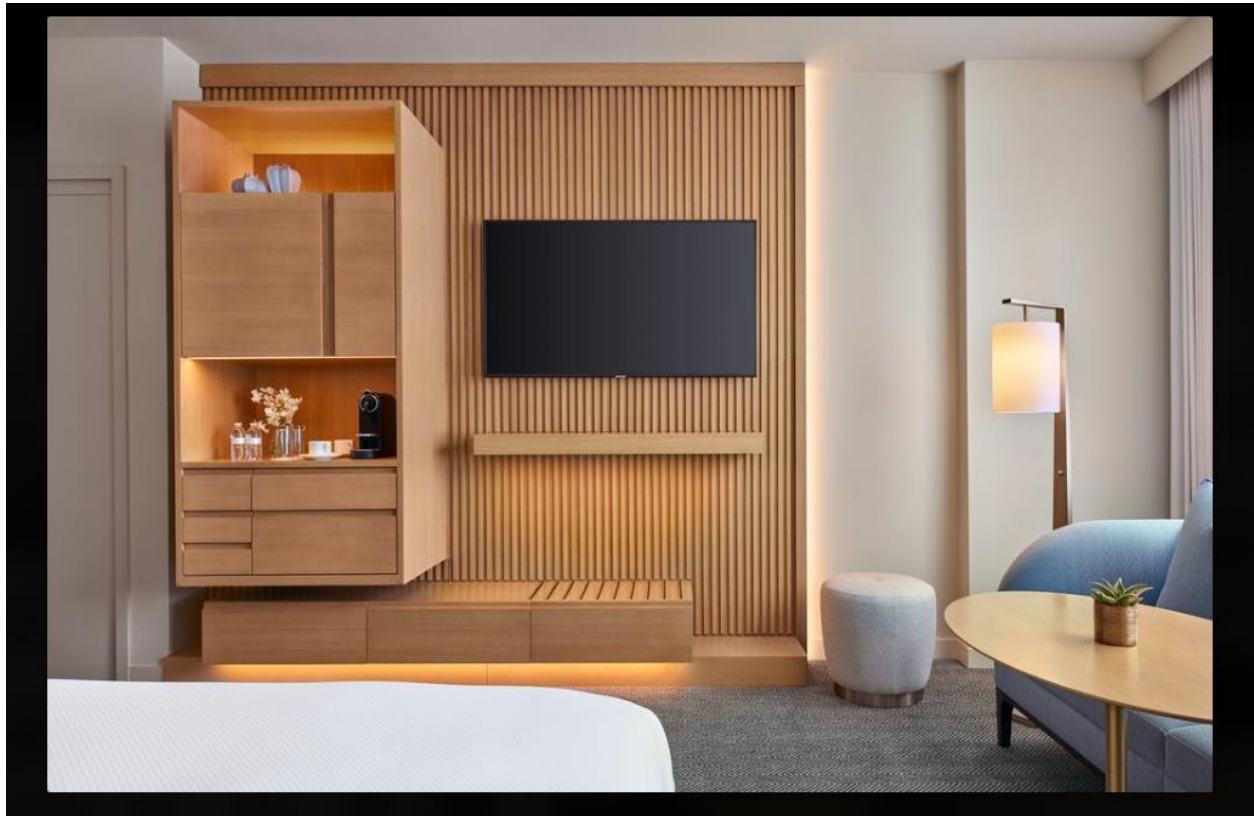


Reliable
Infratech Solutions
ONE STOP FOR ALL INFRASTRUCTURE NEEDS





Reliable
Infratech Solutions
ONE STOP FOR ALL INFRASTRUCTURE NEEDS





Reliable
Infratech Solutions
ONE STOP FOR ALL INFRASTRUCTURE NEEDS





Reliable
Infratech Solutions
ONE STOP FOR ALL INFRASTRUCTURE NEEDS





Roofing Solutions

Roofing Solutions encompass diverse materials and systems designed to provide weatherproof protection, insulation, and structural integrity to buildings. Common types include metal roofing (steel, aluminum), built-up roofing (multiple asphalt layers), thermoplastic membranes (TPO, PVC), and bitumen sheets. These solutions are selected based on factors like durability, climate resilience, energy efficiency, and cost-effectiveness.

Metal roofing offers longevity and resistance to harsh weather, while membrane roofing provides waterproofing with minimal maintenance. Built-up roofing ensures robust



protection for flat roofs, widely used in commercial and industrial buildings. Modern roofing solutions may also integrate solar panels or reflective coatings to reduce energy consumption and improve sustainability





Reliable
Infratech Solutions
ONE STOP FOR ALL INFRASTRUCTURE NEEDS





Reliable
Infratech Solutions
ONE STOP FOR ALL INFRASTRUCTURE NEEDS





Acoustic Insulation

Acoustic Insulation materials are designed to reduce noise transmission within and between rooms by absorbing and dampening sound waves. Common materials include acoustic foam panels, mineral wool, fiberglass insulation, and resilient channels. These solutions improve sound quality, privacy, and comfort in residential, commercial, and industrial spaces by minimizing echoes and external noise intrusion. Acoustic insulation is widely used in recording studios, offices, theaters, and multi-unit housing



Reliable
Infratech Solutions
ONE STOP FOR ALL INFRASTRUCTURE NEEDS







Fireproofing Materials

Fireproofing Materials are specialized products used in building construction to resist or retard the spread of fire, providing crucial safety to structures and occupants. These materials include intumescent coatings, fire-resistant boards, sprays, and cementitious compounds that form protective layers on structural elements like steel beams and concrete surfaces. By enhancing fire resistance, these materials help in preventing structural collapse and provide valuable time for evacuation and firefighting efforts.

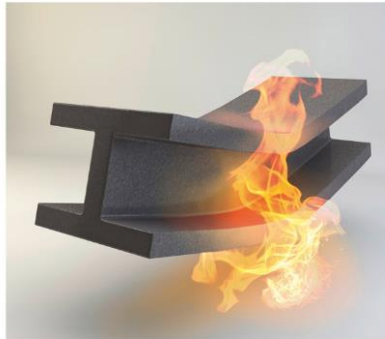


Reliable

Infratech Solutions

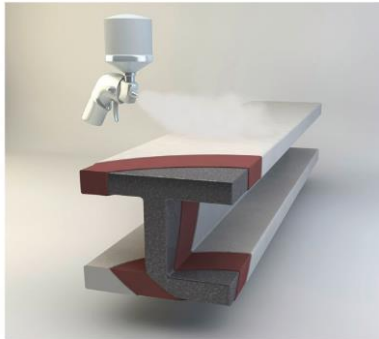
ONE STOP FOR ALL INFRASTRUCTURE NEEDS

Unprotected steel



— At a critical temperature of 500 °C steel loses its strength. Fire resistance ratings may be far less than 30 minutes.

Steel protected with intumescent coating



— Typical application of an intumescent coating done by airless-spray, brush or roller.

Steel protected with intumescent coating in a fire scenario



— Steel with an intumescent coating fulfills the official test requirements for e.g. 30, 60, 90, 120, 180 minutes.



Reliable

Infratech Solutions

ONE STOP FOR ALL INFRASTRUCTURE NEEDS





Reliable
Infratech Solutions
ONE STOP FOR ALL INFRASTRUCTURE NEEDS





Reliable
Infratech Solutions
ONE STOP FOR ALL INFRASTRUCTURE NEEDS

C Tech-LLC[®]
CYTEC's Composite Technology LLC

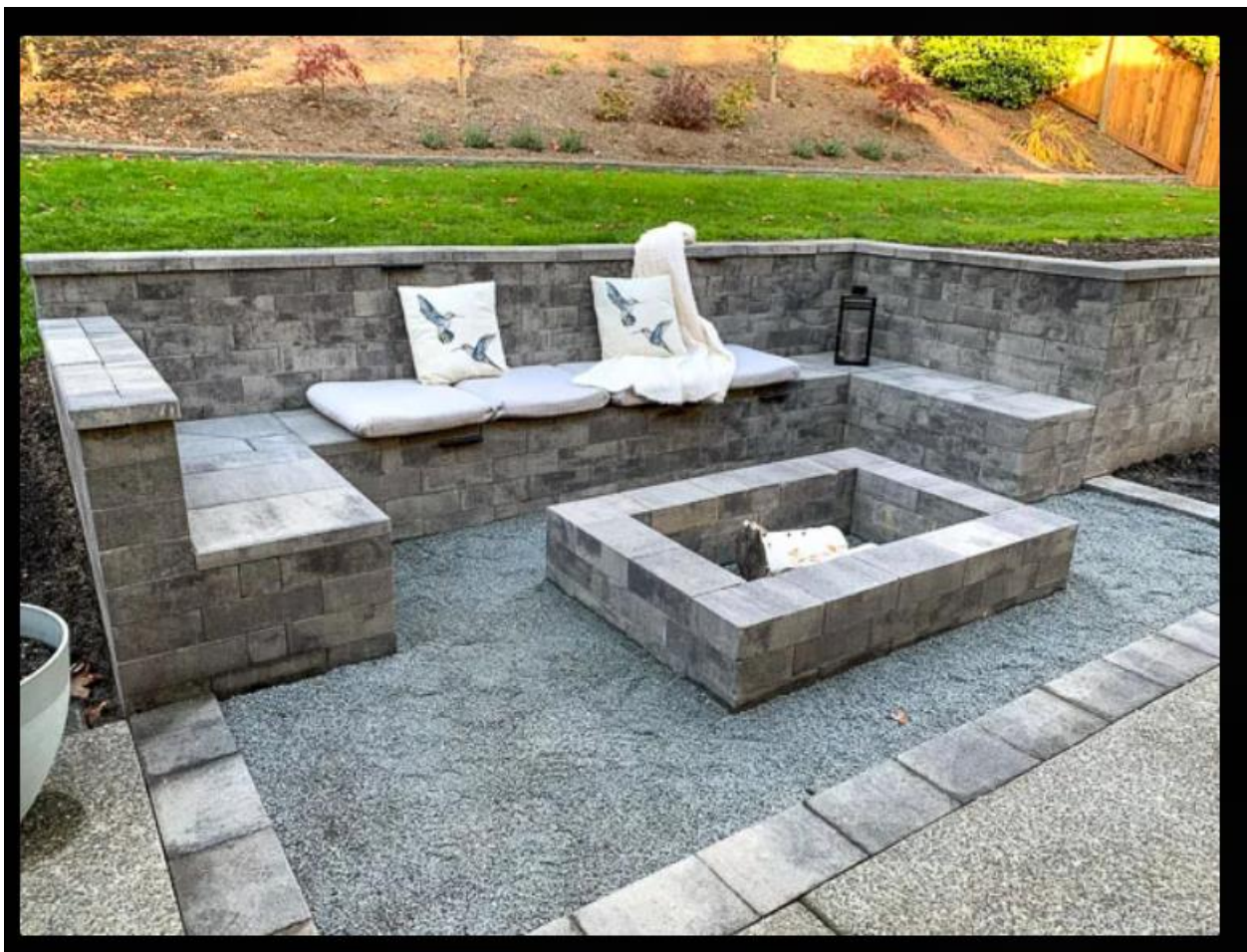


Landscaping Elements (Hardscaping, etc.)



Landscaping Elements such as hardscaping include structural and decorative outdoor features like patios, walkways, retaining walls, benches, and planters. These elements enhance the usability and aesthetic appeal of outdoor spaces around buildings.

Hardscaping is combined with softscaping (plants, lawns) to create functional, attractive, and sustainable outdoor environments, improving both visual appeal and property value





Reliable
Infratech Solutions
ONE STOP FOR ALL INFRASTRUCTURE NEEDS





Reliable
Infratech Solutions
ONE STOP FOR ALL INFRASTRUCTURE NEEDS





Waterproofing Solutions

Waterproofing Solutions in construction involve specialized coatings, membranes, and sealants applied to roofs, basements, walls, and foundations to prevent water ingress and damage. These solutions ensure the structural integrity of buildings by protecting against moisture, leaks, and water-related deterioration, thereby enhancing durability and occupant comfort. Common materials include bituminous membranes, liquid waterproof coatings, and waterproofing sheets applied based on surface type and exposure conditions.

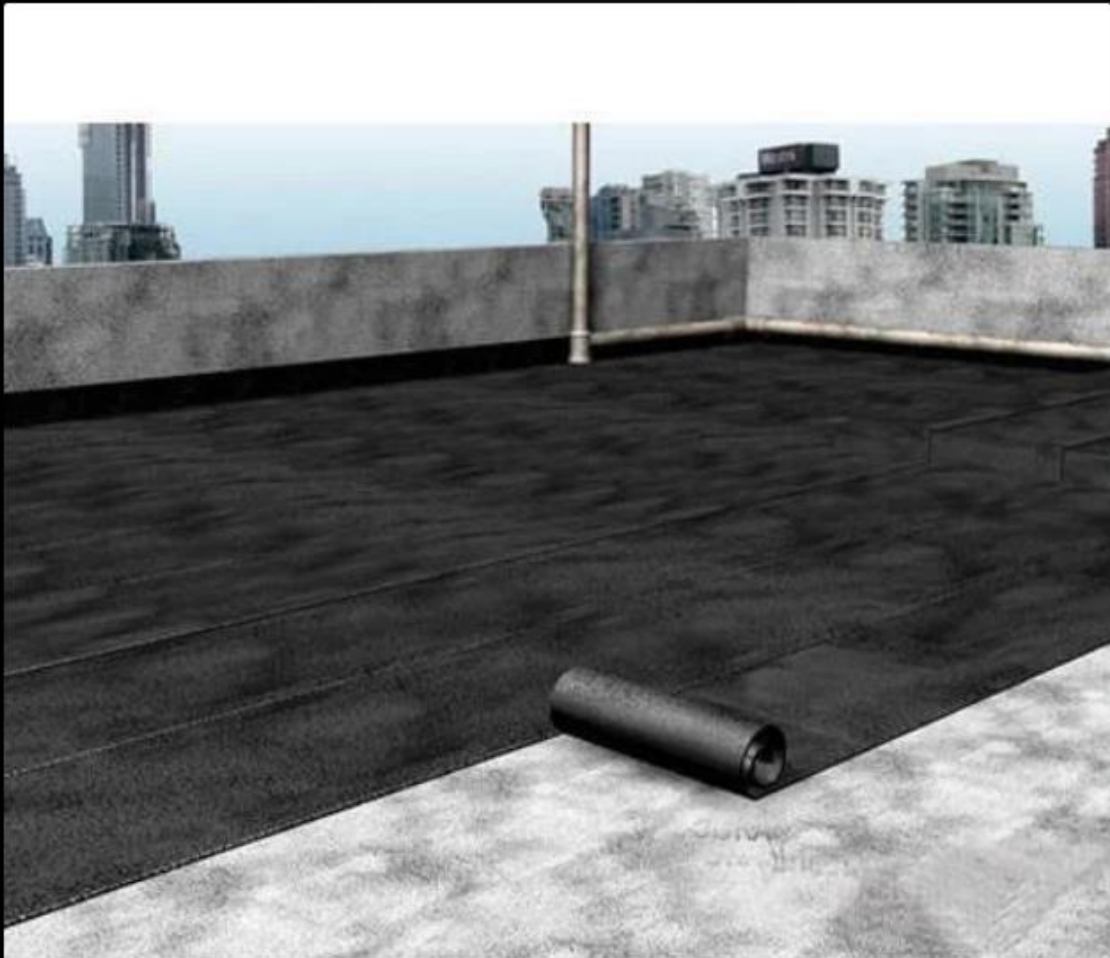


Reliable
Infratech Solutions
ONE STOP FOR ALL INFRASTRUCTURE NEEDS





Reliable
Infratech Solutions
ONE STOP FOR ALL INFRASTRUCTURE NEEDS





Reliable
Infratech Solutions
ONE STOP FOR ALL INFRASTRUCTURE NEEDS



Heavy Machinery Control Panels

Heavy Machinery Control Panels are specialized industrial control units designed to manage and operate complex construction and manufacturing equipment. These panels include an array of switches, gauges, indicators, and digital controls that enable operators to monitor and control machinery functions safely and efficiently. They are critical for



ensuring precise operation, safety protocols, and performance optimization in heavy equipment use.



Image ID: PH426K
www.alamy.com



Flooring Solutions

Flooring Solutions encompass a wide range of materials including ceramic tiles, marble, wooden planks, vinyl sheets, and laminates tailored for residential, commercial, and industrial buildings. These flooring options provide durability, aesthetic appeal, and comfort while catering to specific usage requirements such as slip resistance, noise reduction, and ease of maintenance. Selection depends on functionality and interior design goals to complement the architectural style of the building.



Reliable
Infratech Solutions
ONE STOP FOR ALL INFRASTRUCTURE NEEDS





Reliable

Infratech Solutions

ONE STOP FOR ALL INFRASTRUCTURE NEEDS





Reliable

Infratech Solutions

ONE STOP FOR ALL INFRASTRUCTURE NEEDS





Reliable
Infratech Solutions
ONE STOP FOR ALL INFRASTRUCTURE NEEDS





Reliable

Infratech Solutions

ONE STOP FOR ALL INFRASTRUCTURE NEEDS



Reliable

Infratech Solutions

ONE STOP FOR ALL INFRASTRUCTURE NEEDS





Facade Glass Components

Facade glass components consist of high-strength glass panels and supporting structural frames used in the exteriors of commercial and residential buildings. These components provide transparency, aesthetic appeal, and environmental control including insulation and natural light penetration. The glass components are commonly assembled as curtain walls which protect the building envelope while contributing to the modern architectural appearance.





Reliable

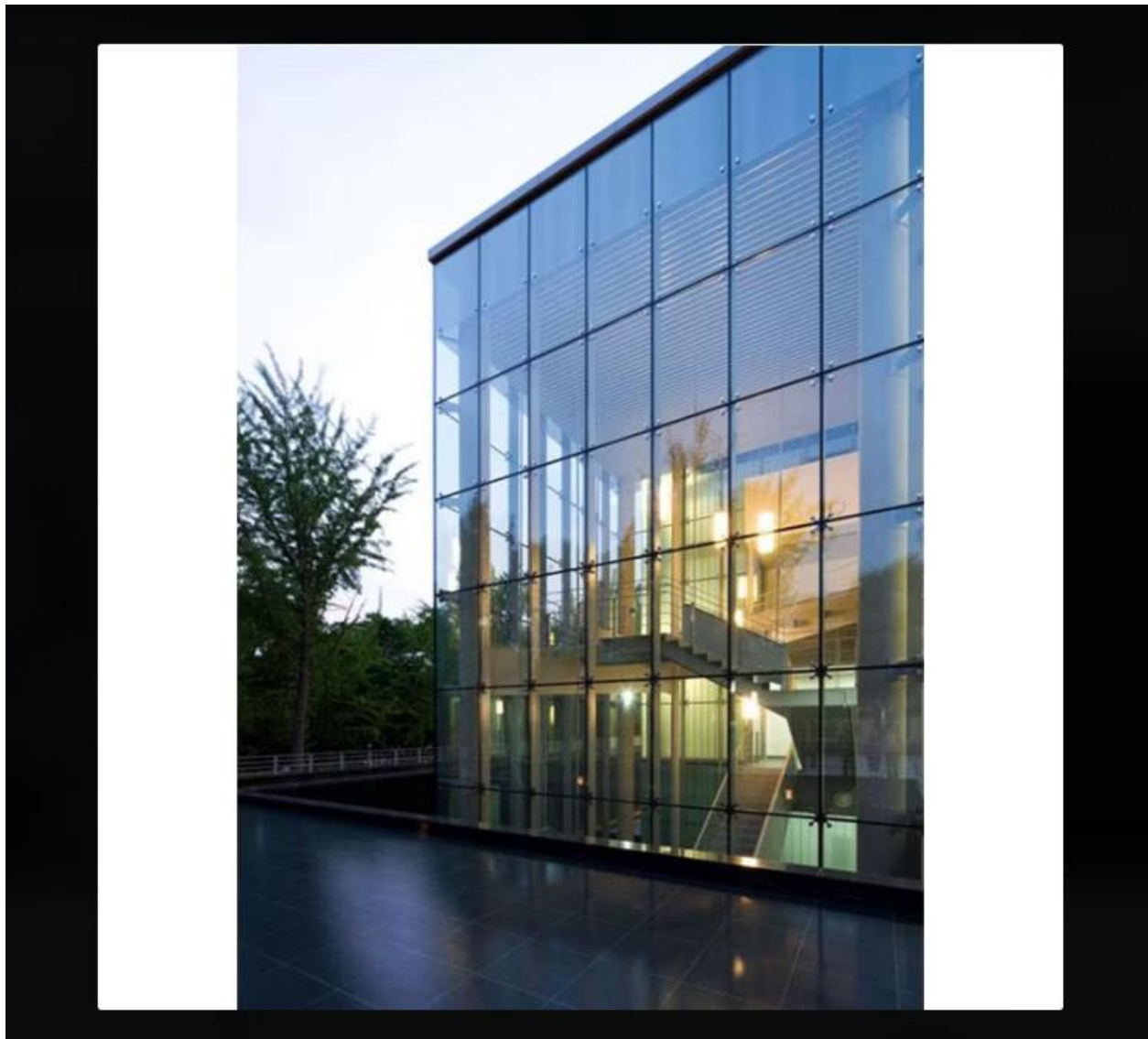
Infratech Solutions

ONE STOP FOR ALL INFRASTRUCTURE NEEDS





Reliable
Infratech Solutions
ONE STOP FOR ALL INFRASTRUCTURE NEEDS





Reliable

Infratech Solutions

ONE STOP FOR ALL INFRASTRUCTURE NEEDS





Reliable

Infratech Solutions

ONE STOP FOR ALL INFRASTRUCTURE NEEDS





Reliable
Infratech Solutions
ONE STOP FOR ALL INFRASTRUCTURE NEEDS



1. Vertical Transport (Escalators, Walkways)

Vertical Transport systems such as escalators and walkways are integral components in modern buildings, facilitating smooth and efficient movement of people between floors.



Escalators are motorized staircases that continuously move to transport individuals, while walkways serve as horizontal or inclined pedestrian passages that connect different areas within commercial or public spaces. These systems enhance accessibility, reduce congestion, and improve overall building circulation safety and convenience





Reliable

Infratech Solutions

ONE STOP FOR ALL INFRASTRUCTURE NEEDS





Reliable

Infratech Solutions

ONE STOP FOR ALL INFRASTRUCTURE NEEDS